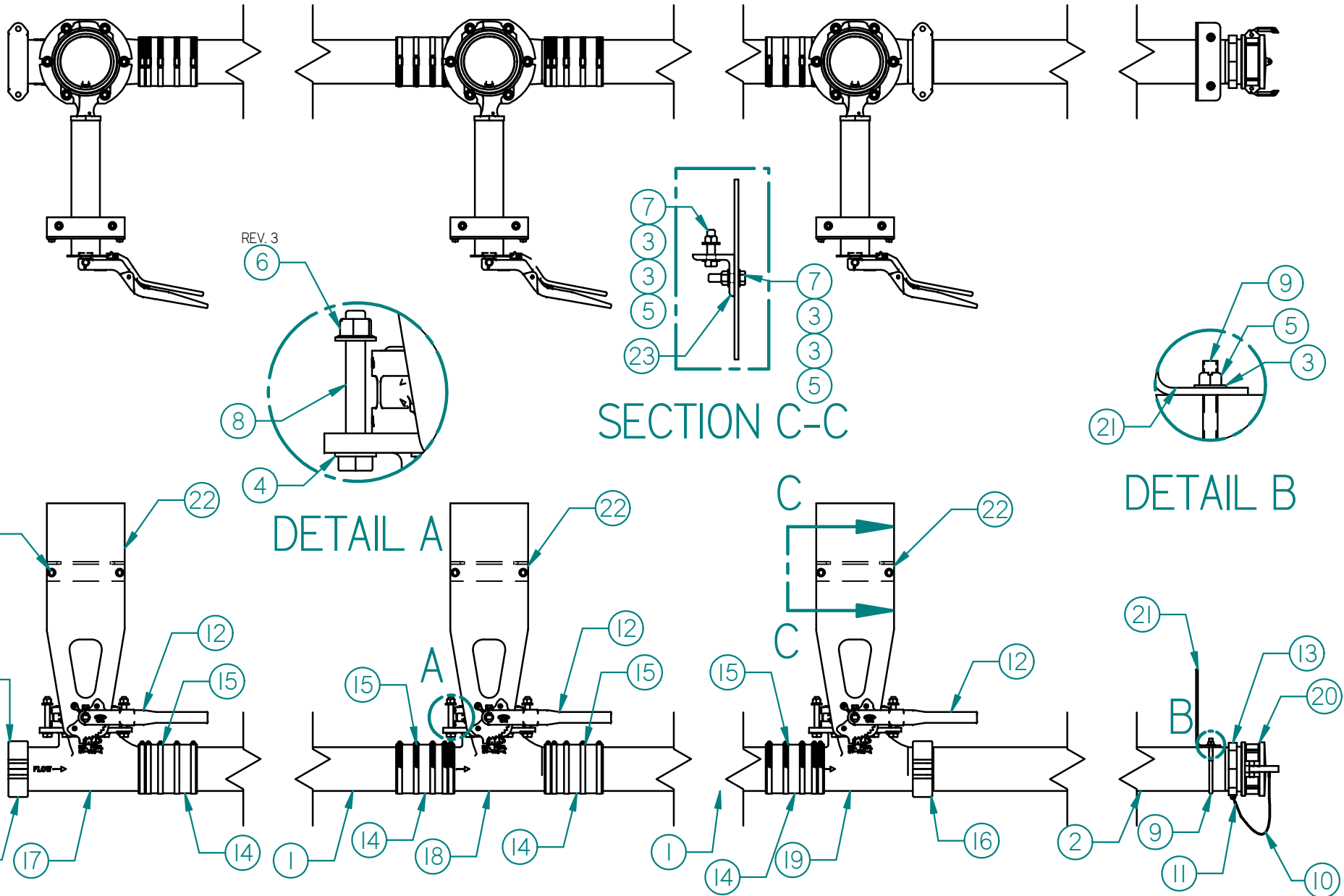


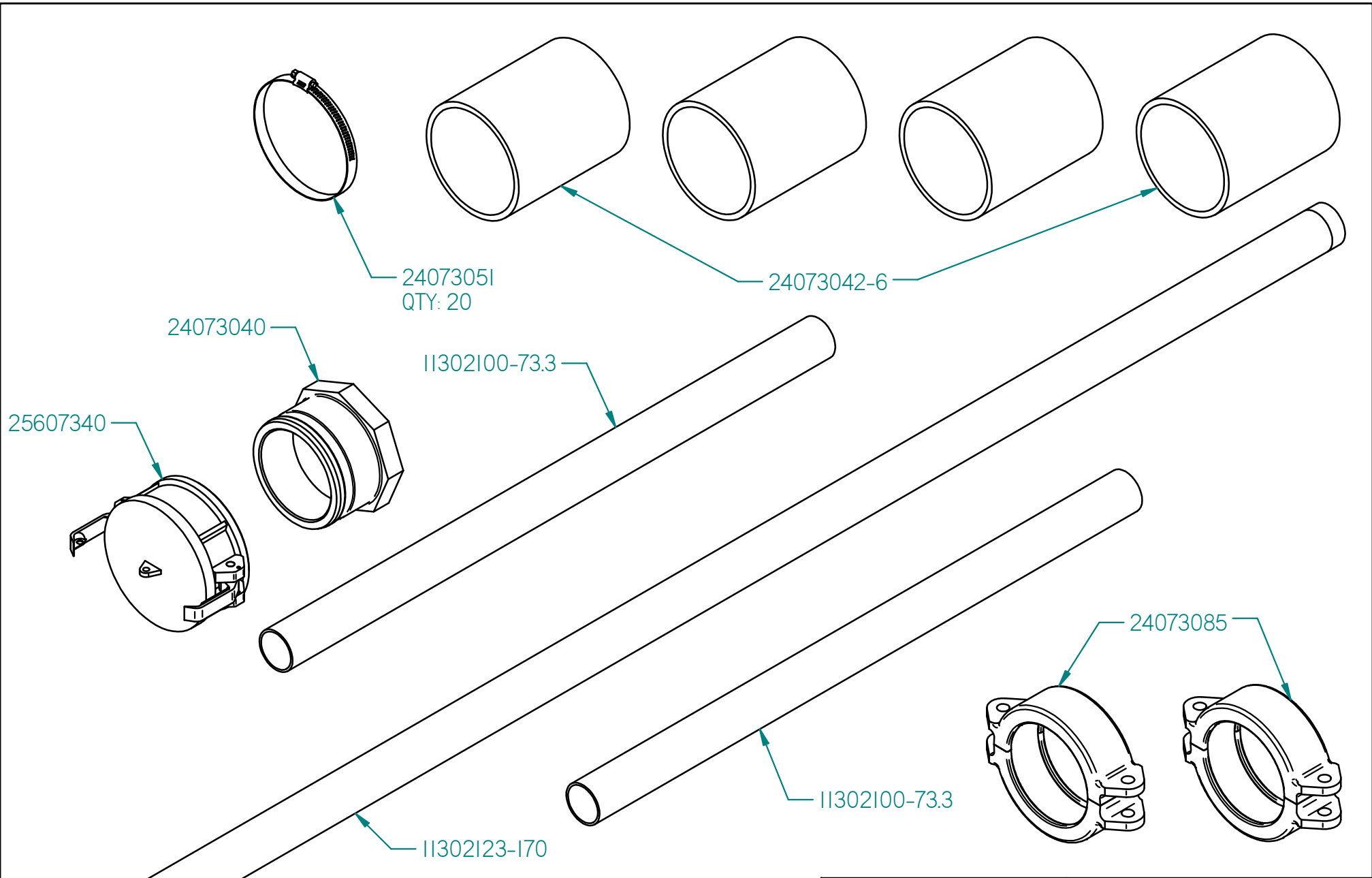
# CEMENT DISCHARGE RETRO FIT KIT 1050



SOLID EDGE

3	6/25/2013	REPLACED (18) 20215138 HEX NUT AND (18) 20105000 WASHER WITH (18) 20245139 HEX FLANGE NUT	SA-364	MJM	THIS DRAWING IS THE PROPERTY OF MAC MANUFACTURING INC. AND SUBJECT TO RECALL, AT ANY TIME. DUPLICATION OR DISTRIBUTION WITHOUT PERMISSION IS PROHIBITED. UNLESS OTHERWISE SPECIFIED DIMENSIONS ARE IN INCHES ANGLES ±2° FRACTIONS ±1/16" DECIMALS ±0.02	<b>MAC</b> MANUFACTURING INC. CEMENT DISCH RETROFIT KIT 1050
		2	12/16/2015	REMOVED 11302112-3 FROM ASM		
1	11/30/15	RELEASED TO PRODUCTION	N/A	CAB	DRAWN: CAB DATE: 11/30/15	PART #: 73803000
REV.	DATE	REASON FOR CHANGE	ECN #	BY	WEIGHT: 0.7 lbm PAGE 1 OF 5	

# CEMENT DISCHARGE RETRO FIT KIT I050



REV.	DATE	REASON FOR CHANGE	ECN #	BY
3	6/25/2018	REPLACED (18) 20215138 HEX NUT AND (18) 20105000 WASHER WITH (18) 20245139 HEX FLANGE NUT	SA-364	MJM
2	12/16/2015	REMOVED 11302112-3 FROM ASM	N/A	DZK
1	11/30/15	RELEASED TO PRODUCTION	N/A	CAB

THIS DRAWING IS THE PROPERTY OF MAC MANUFACTURING INC. AND SUBJECT TO RECALL, AT ANY TIME. DUPLICATION OR DISTRIBUTION WITHOUT PERMISSION IS PROHIBITED.

**MAC** MANUFACTURING INC.

UNLESS OTHERWISE SPECIFIED DIMENSIONS ARE IN INCHES ANGLES ±2° FRACTIONS +1/16" DECIMALS ±0.02

CEMENT DISCH RETROFIT KIT I050

DRAWN: CAB

DATE: 11/30/15

WEIGHT: 0.7 lbm

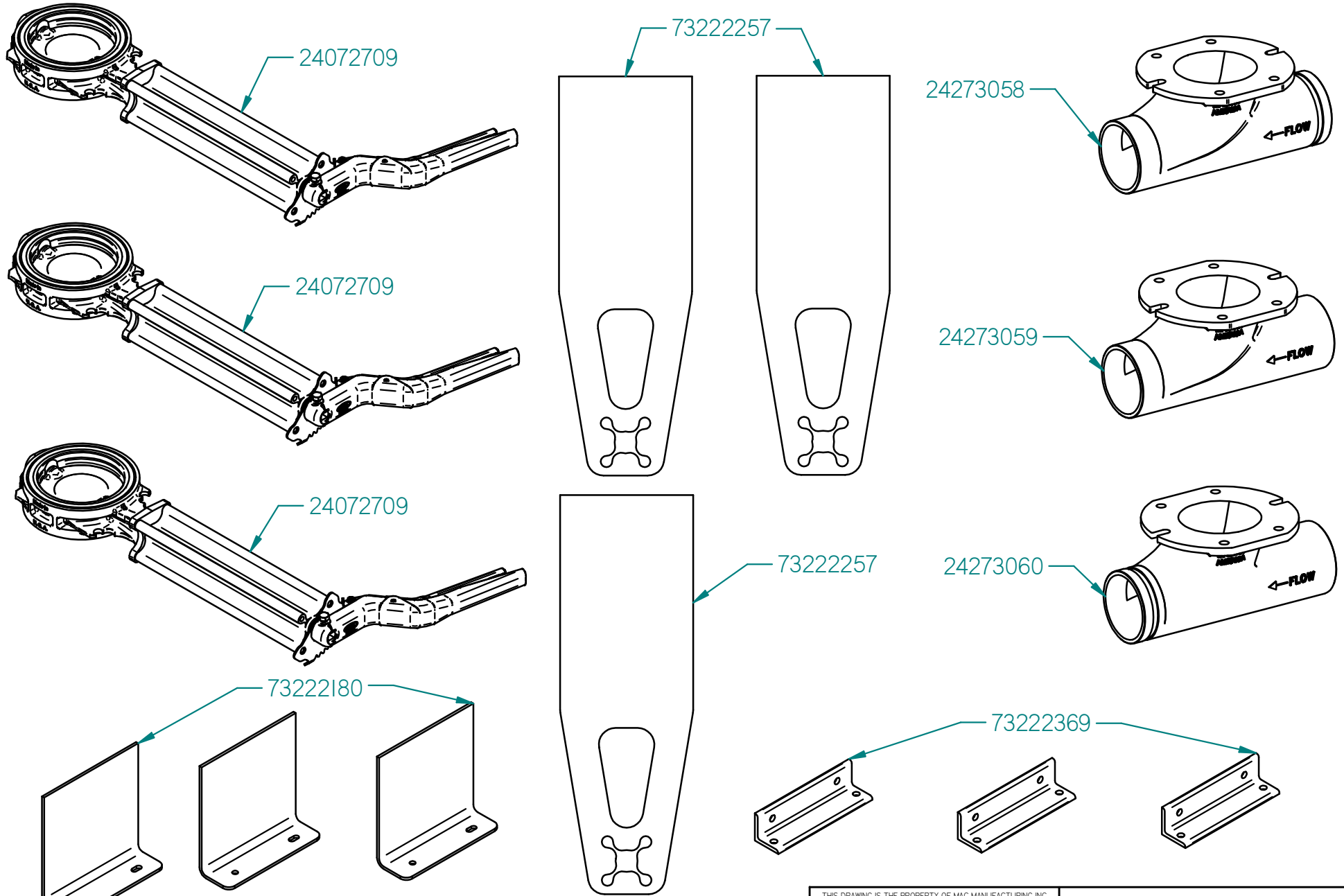
PAGE 2 OF 5

PART #: 73803000

SOLID EDGE

# CEMENT DISCHARGE RETRO FIT KIT 1050

PART #: 73803000



SOLID EDGE

REV.	DATE	REASON FOR CHANGE	ECN #	BY
3	6/25/2018	REPLACED (18) 20215138 HEX NUT AND (18) 20105000 WASHER WITH (18) 20245139 HEX FLANGE NUT	SA-364	MJM
2	12/16/2015	REMOVED 11302112-3 FROM ASM	N/A	DZK
1	11/30/15	RELEASED TO PRODUCTION	N/A	CAB

THIS DRAWING IS THE PROPERTY OF MAC MANUFACTURING INC. AND SUBJECT TO RECALL, AT ANY TIME. DUPLICATION OR DISTRIBUTION WITHOUT PERMISSION IS PROHIBITED.	
UNLESS OTHERWISE SPECIFIED DIMENSIONS ARE IN INCHES ANGLES ±2° FRACTIONS ±1/16" DECIMALS ±0.02	
DRAWN: CAB	DATE: 11/30/15
WEIGHT: 0.7 lbm	PAGE 3 OF 5

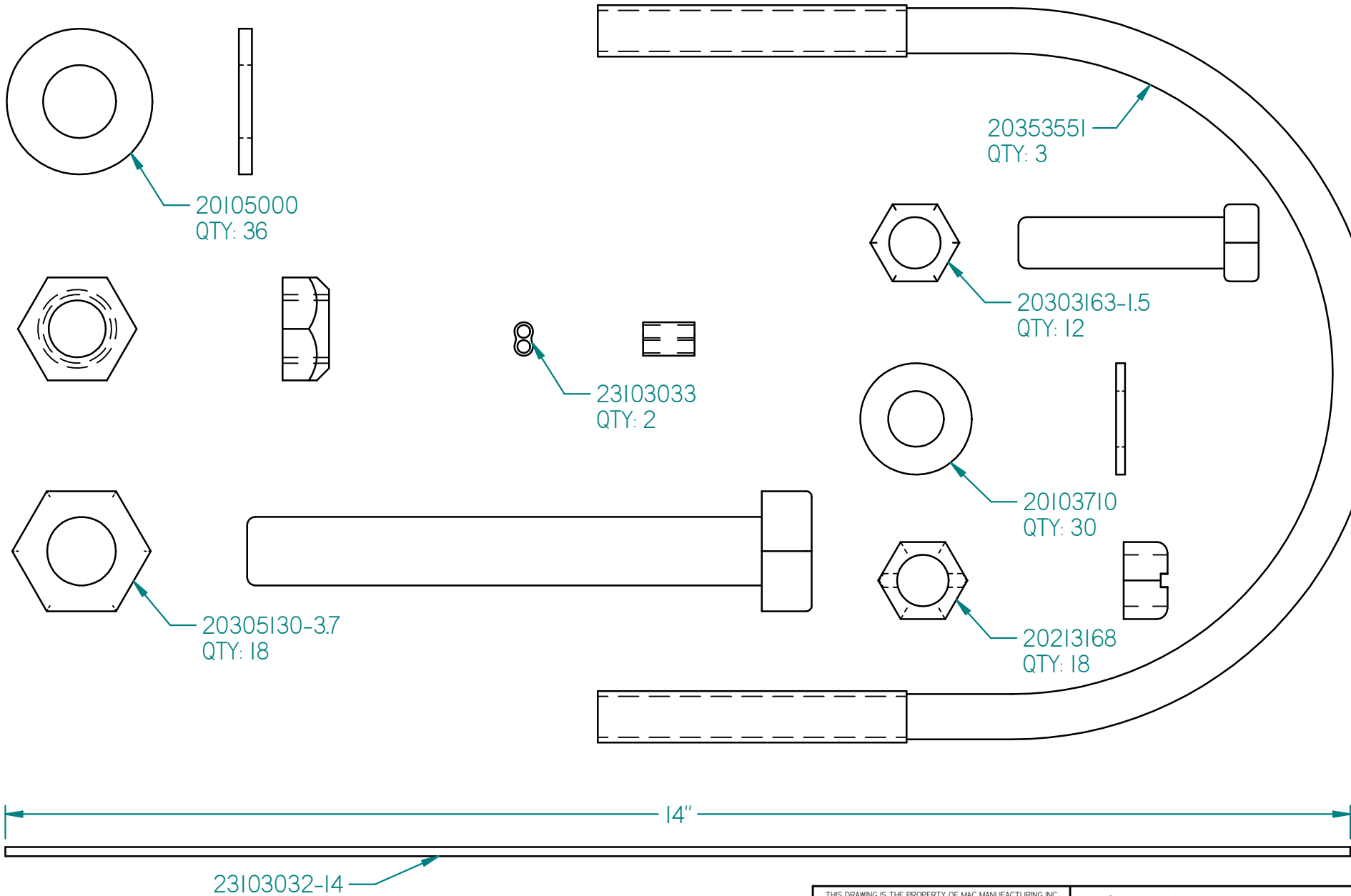
**MAC** MANUFACTURING INC.

CEMENT DISCH RETROFIT KIT 1050

PART #: 73803000

# CEMENT DISCHARGE RETRO FIT KIT 1050

PART #: 73803000



SOLID EDGE

3	6/25/2018	REPLACED (18) 20215138 HEX NUT AND (18) 20105000 WASHER WITH (18) 20245139 HEX FLANGE NUT	SA-364	MJM
2	12/16/2015	REMOVED 11302112-3 FROM ASM	N/A	DZK
1	11/30/15	RELEASED TO PRODUCTION	N/A	CAB
REV.	DATE	REASON FOR CHANGE	ECN #	BY

THIS DRAWING IS THE PROPERTY OF MAC MANUFACTURING INC. AND SUBJECT TO RECALL AT ANY TIME. DUPLICATION OR DISTRIBUTION WITHOUT PERMISSION IS PROHIBITED.

MAC MANUFACTURING INC.

UNLESS OTHERWISE SPECIFIED DIMENSIONS ARE IN INCHES  
ANGLES ±2° FRACTIONS ±1/16" DECIMALS ±0.02

CEMENT DISCH RETROFIT KIT 1050

DRAWN: CAB      DATE: 11/30/15

WEIGHT: 0.7 lbm      PAGE 4 OF 5

PART #: 73803000

# CEMENT DISCHARGE RETRO FIT KIT I050

## PARTS LIST FOR 73803000

ITEM	QTY.	PART No.	DESCRIPTION	WEIGHT
1	2	11302100-73.3	PIPE, 4" SCH 40 ALUM	45.6 lbm
2	1	11302123-170	PIPE, 4" SCH40 ALUM, GRV/THD	52.3 lbm
3	30	20103710	WASHER, 3/8" STAINLESS	0.2 lbm
4	18	20105000	WASHER, 1/2" SAE ZINC	1.8 lbm
5	18	20213168	LOCKNUT,3/8-16 GR 8	0.2 lbm
6	18	20245139	LOCK NUT, 1/2-13 GR5 FLANGE LOCK, TOP LOCK	1.0 lbm
7	12	20303163-1.5	HHCS,3/8-16 X 1 1/2" STAINLESS	0.8 lbm
8	18	20305130-3.7	BOLT, HHCS 1/2-13 x 3-3/4"LG. GRADE 8	5.0 lbm
9	3	20353551	U-BOLT - 3/8-16 X 4.5" STAINLESS	1.1 lbm
10	1	23103032-14	3/32" X 14" WIRE ROPE	0.0 lbm
11	2	23103033	WIRE CRIMP	0.0 lbm
12	3	24072709	5" BTI BUTTERFLY VALVE SS/DISC, 14" EXT HD HANDLE	0.0 lbm
13	1	24073040	COUPLER - 4" AL, GROOVED W/ FEM THREAD	1.5 lbm
14	4	24073042-6	HOSE 4.5" ID, RUBBER CLAMP	3.0 lbm
15	20	24073051	HOSE CLAMP, SST 5 1/2", WORM GEAR	0.0 lbm
16	2	24073085	VICTAULIC CLAMP, 4" BOLT ON	7.6 lbm
17	1	24273058	HOPPER TEE, ALUM, 5 X 4 SIPHON FLOW STRAIGHT GRV/PLN	7.2 lbm
18	1	24273059	HOPPER TEE, ALUM, 5 X 4 SIPHON FLOW STRAIGHT PNL/PLN	6.8 lbm
19	1	24273060	HOPPER TEE, ALUM, 5 X 4 SIPHON FLOW STRAIGHT PLN/GRV	6.7 lbm
20	1	25607340	DUST CAP, 4" ALUM	1.7 lbm
21	3	73222180	4" PIPE BRACKET, SIDE	4.4 lbm
22	3	73222257	BRKT, HANDLE EXT SUPPORT, 14"	8.4 lbm
23	3	73222369	ANGLE, EXTENSION SUPPORT MOUNT	2.1 lbm